

Make a lampshade

STEP 1

Iron Fabric WELL

Cut Lampshade PVC to size for the lampshade Frame

REMOVE ANY COTTON THREADS / HAIR FROM FABRIC



STEP 2

Lay your ironed fabric right side down on clean flat surface. Lay your lampshade paper (cut to size) on top of your fabric, ensuring you have at least 1.5cm excess fabric along the long edges.



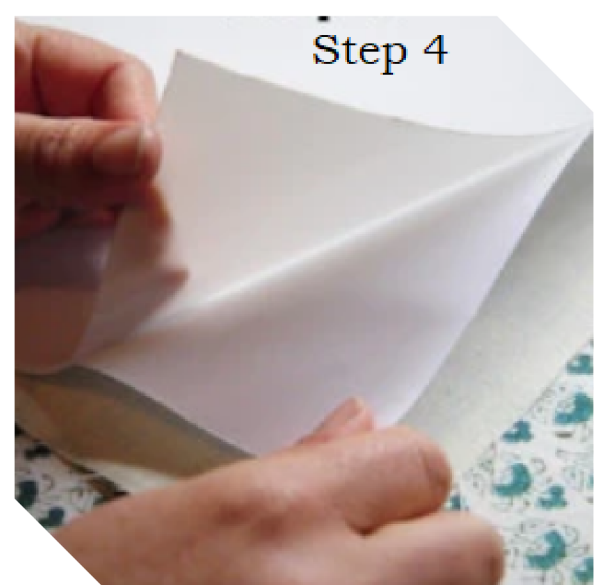
STEP 3

Make sure your fabric is right side down on the table and your lampshade paper has the release paper facing the wrong side of the fabric.



STEP 4

Carefully peel back the corner of release paper away from the lampshade paper. Peel back and tuck under the lampshade paper.



Make a lampshade

STEP 5

Keeping your fabric and lampshade paper lined up (ensuring you maintain your 1.5cm excess fabric edges), press the lampshade paper down onto the fabric, smooth it down.

STEP 6

Continue peeling and pressing your lampshade paper onto your fabric, a little at a time, smooth it as you go.

STEP 7

Continue peeling and pressing all the way to the end. Smooth the whole piece with your hands, flip your fabric and lampshade paper over, check for bubbles or creases and smooth out with your hands.

STEP 8

Apply double sided tape (12mm) to the short end (height of shade) of the fabric next to the PVC material at one end. Dont remove top layer of double sided tape



Make a lampshade

STEP 9

Remove the tape and fold the fabric over to stick to the PVC. This makes a nice seam on the lampshade

STEP 10

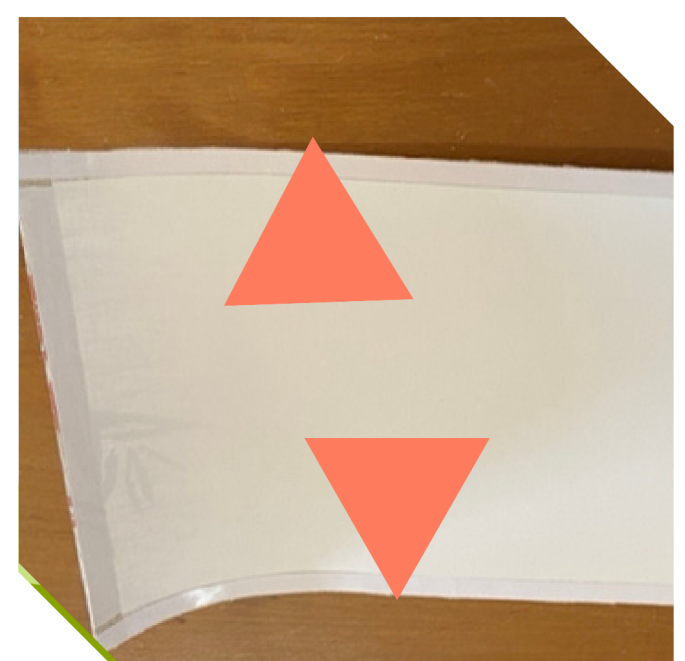
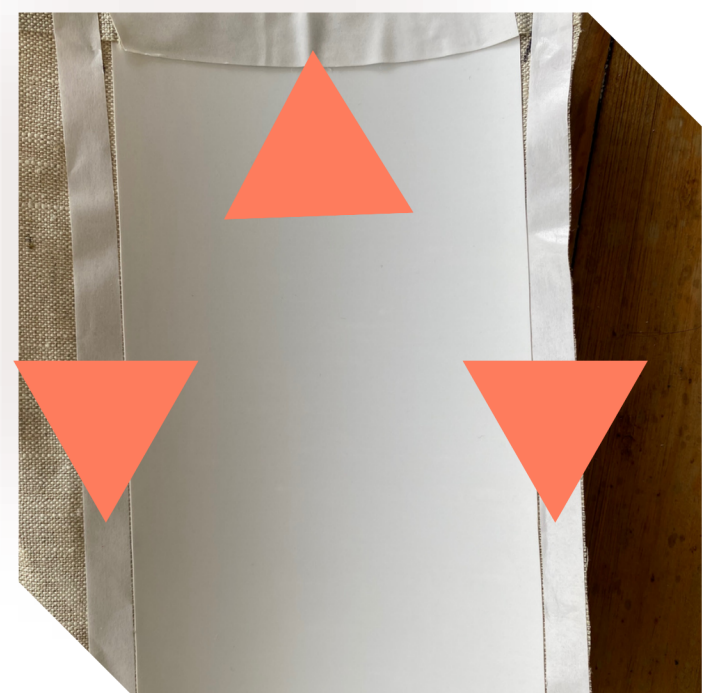
At the other end of short end (height of shade) of the PVC, trim the fabric neatly away. Make sure you trim right to the end of the PVC, no frayed or raggy ends. This is end is inside the drum

STEP 11

Apply 12mm doublesided tape to fabric, directly next to the PVC, on both long ends. Also apply 12mm tape to the short end where the fabric is glued to the PVC material .

STEP 12

On the long ends trim the fabric along the line of the doublesided tape. Trim right on the edge where the fabric and the tape



Make a lampshade

STEP 13

Apply 3mm double sided tape to the lampshade ring set (dont remove the top layer of the tape yet)

STEP 14

You will be applying the ring set.

CHECK the **ring** which attaches to the **lamp/light fixture** is applied correctly. For lamp is the bottom, for a pendent lampshade apply to the top.

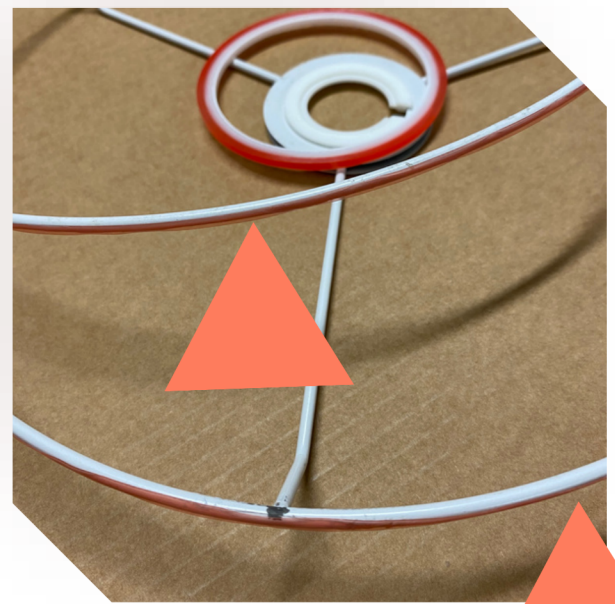
STEP 15

Remove the top layer of the double sided tape on the ring set.

Align the ring set onto the edge of the PVC. The ring with the lamp fixture, apply between two structure supports

STEP 16

Balancing the two rings. Gently roll the PVC onto the frame set using the double-sided tape. Roll both sides at the same pace.



Make a lampshade

STEP 17

remove the inside double sided tape to join the two ends of the lampshade pvc

STEP 18

Firmly apply pressure to seal the seam

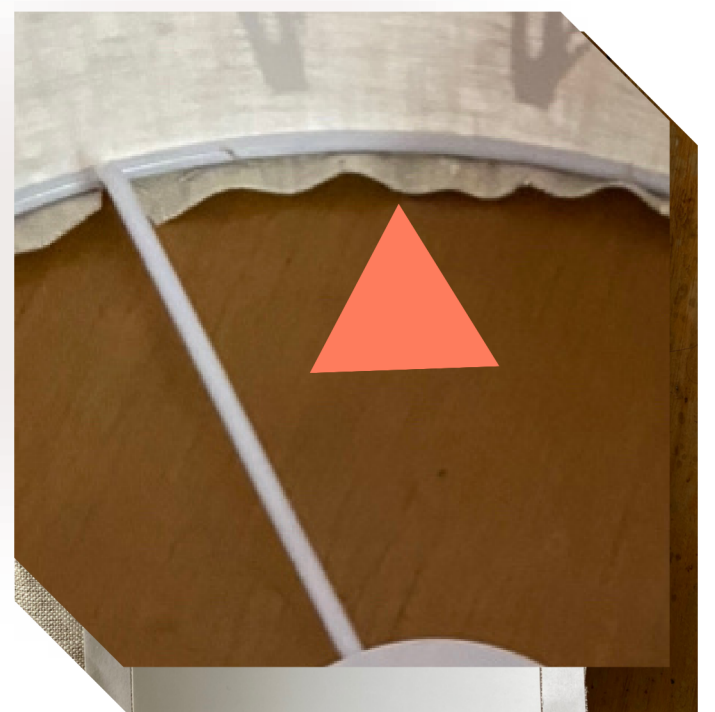
STEP 19

Remove the double sided tape on the fabric

So that you can wrap the fabric around the ring

STEP 20

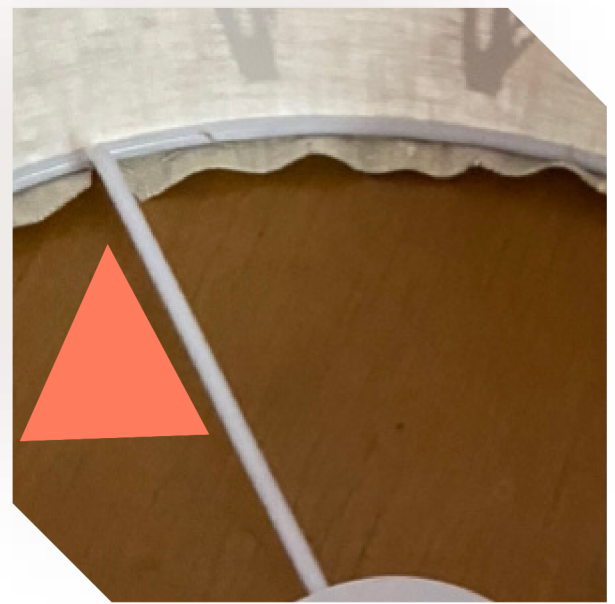
Tuck the fabric under the ring using a long nail or butter knife. Work your way around both ends. press the fabric up under the ring so that it takes contact with the double-sided tape.



Make a lampshade

STEP 21

Using the tip of the scissors snap a small cut in the fabric allowance in line with the three wires in the base of the frame. Make sure you only snip to the inside edge of the ring



STEP 22

Tuck in the wings by pushing the fabric with the tool. IF you are having trouble getting into it, just trim a little bit off



STEP 23

Gently tidy up the rings and fabric



STEP 24

Stand Back and admire your work

